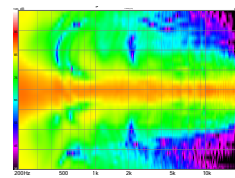
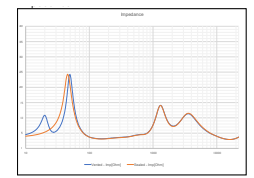


Horizontal Directivity



Vertical Directivity



Impedance

MODEL S5t



TECHNICAL SPECIFICATIONS



Borrowing its technology from our flagship S7t. The more modestly sized S5t mirrors many of the S7t attributes. Featuring our proprietary DPC-Array controlling Mid/High frequencies, centered by our finest 28mm Beryllium dome and dual 28mm TPCD ultra-lightweight domes. All transducers are developed ground up by our engineers – bringing decades of research, culminating in this world class design. We teamed up with companies in the USA and Sweden to bring modern material science to hi-fi. Utilizing advanced Comsol acoustical modeling, our DPC-array is the result of 18 months of painstaking simulations and prototyping. The result is one of the most technologically advanced loudspeakers available. This new tweeter/waveguide DPC-Array delivers amazing accuracy, smoothness, and directivity control to handle the critical vocal range and delicate treble. All S-Series speakers share the same DPC-Array and benefit from our unique timbre matching technique across the entire series. Custom bass drivers made from thinly carbon diaphragms (TPCD) can be configured as bass reflex or acoustic suspension and adjusted for listener preference. True full range performance with unparalleled dynamic range and musical finesse.

BASIC

Dimensions (HxWxD)
1119 x 240 x 400mm
44.1 x 9.5 x 15.8"

Weight
43.2 kg (95.1 lbs.)

Available finishes
Piano Gloss Black, White
Special Edition Veneers

TECHNICAL

Enclosure Alignment

3-way bass reflex / acoustic suspension

Frequency Response (-10dB)

Bass reflex: 24 - 32kHz
Acoustic suspension: 36 - 32kHz

Driver complement

DPC-Array: 28mm(3) Beryllium
28mm(2) Textreme TPCD
Woofers: 180mm(2) Textreme TPCD

Typical In Room bass extension

Bass reflex: 20Hz
Acoustic suspension: 23Hz

Sensitivity (2pi)

89.5dB / 2.83v / 1.0m

Recommended Amplifier Power

100 - 300W RMS

Impedance

4Ω nominal / 3.0Ω min

SPL capability @1m (100-20kHz)

114.3dB peak
114.0dB peak <3% - 2nd, 3rd Harmonics

Response Linearity

80 - 20kHz +/-1.5dB window

Certification

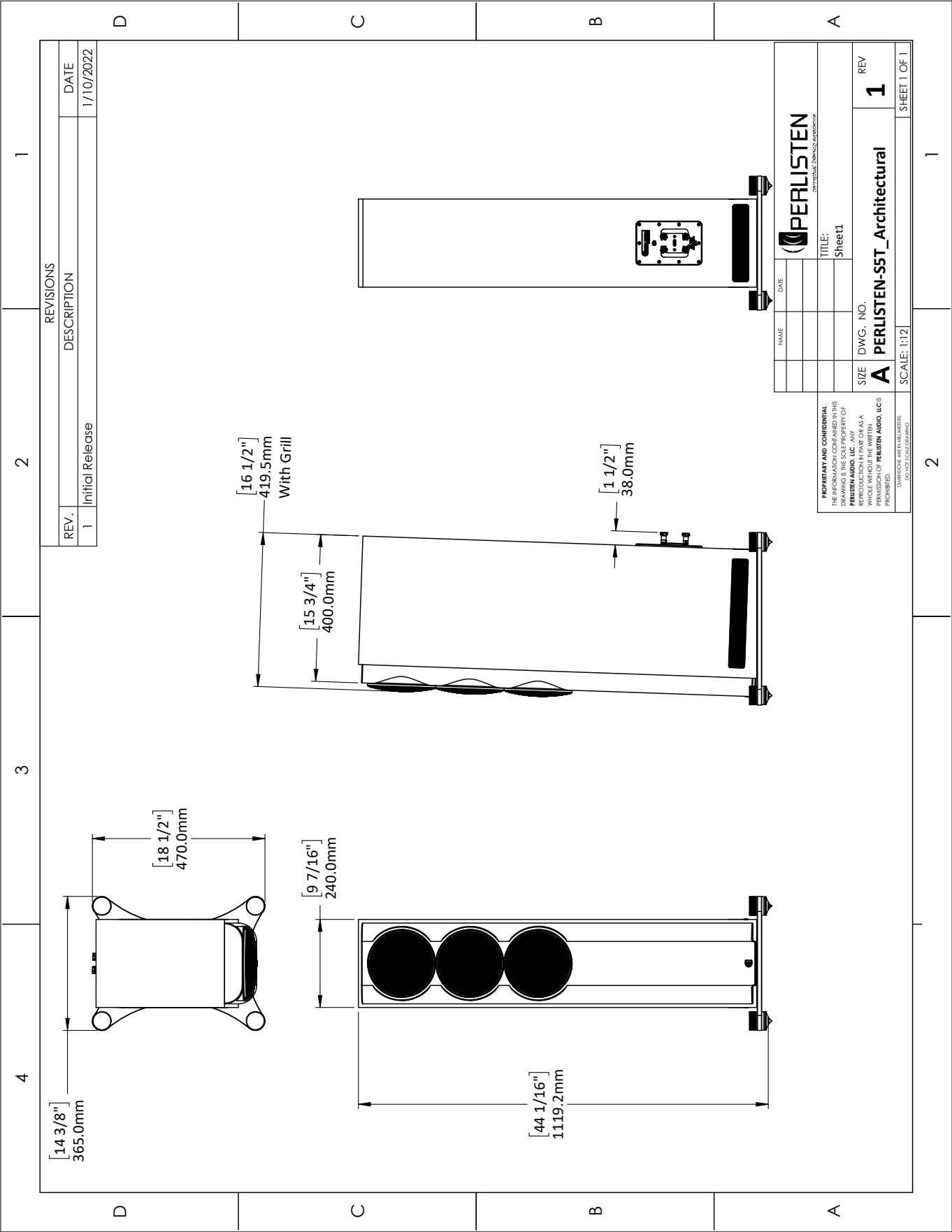
THX Dominus, THX Ultra




DPC Array
Directivity pattern control
*USA Patent pending



TPCD
Thin Ply Carbon Diaphragms



REVISIONS		DATE
REV.	DESCRIPTION	
1	Initial Release	1/10/2022

	
NAME	DATE
TITLE:	Sheet1
SIZE	DWG. NO.
A PERLISTEN-S5T_Architectural	
REV	1
SCALE: 1:12	
SHEET 1 OF 1	

PROPRIETARY AND CONFIDENTIAL
 THE INFORMATION CONTAINED IN THIS DRAWING IS THE SOLE PROPERTY OF PERLISTEN AUDIO, LLC. ANY REPRODUCTION OR TRANSMISSION OF THIS DRAWING WITHOUT THE WRITTEN PERMISSION OF PERLISTEN AUDIO, LLC IS PROHIBITED.
DRAWINGS ARE IN MILLIMETERS UNLESS OTHERWISE SPECIFIED